

NOW VOYAGER!
The world's most beautiful cruises

belle

CITY LIGHTS ALLURING APARTMENTS AND TOWNHOUSES

Trophy life
Interior Design Awards
& ArtStart now open

Arrive
in
Style

THE NEW
AUSTRALIANA
DESIGN STARS
EXPORTING
ANTIPODEAN
SPIRIT

90+ pages of showstopping homes
FROM HERE TO HOLLYWOOD

FRENCH

FLUENTLY



This glamorous yet family-focused apartment epitomises the style of *designers Humbert & Poyet* with both classic and *contemporary references*.

Words **KARINE MONIÉ** Photography **FRANCIS AMIAND**

This page Creating a conversation place in the living room is the curvaceous 'Grand Théodore' sofa upholstered in Christian Fischbacher 'VIP' blue velvet plush alongside the 'Gabrielle' coffee table, a pair of Théodore armchairs upholstered in a linen and wool blend bouclé fabric, timber shelving and marble fireplace, all by Humbert & Poyet. 1960s sconce by Gino Sarfatti and ceramics by Georges Jouve. Photograph by Robert Mapplethorpe. The parquet floors were newly laid. Opposite page: Speckled terrazzo captures the tones of the apartment's white, black and grey palette. Brass railing by Humbert & Poyet. *Subway Drawings* (1989) artwork by Keith Haring.





In Paris's third arrondissement, the charming neighbourhood of Le Marais is where designers Emil Humbert and Christophe Poyet – the duo behind design studio Humbert & Poyet – brought back the luxury of a bygone era for an apartment nestled in what was originally a 17th-century *hôtel particulier* and which had later served as a jewellery atelier in the 19th century. Spread over two floors, the 250sqm apartment retains historic elements but has now been designed for a contemporary lifestyle.

“The master planning was done in accordance with the classical codes of a private residence,” say the designers. The spaces are organised in an *enfilade*. Mouldings and modernised double doors adorned with wood and gleaming brass were reintroduced to both honour the past and reinterpret it in a contemporary way. Respecting tradition, the first floor is home to the public spaces that are dedicated to hosting and entertaining friends and family, while the private upper level houses the bedrooms and bathrooms. “We approach each space by looking at its form and function,” they add. “The frame of the design is created and the stage is set with attention to finishes, materials and furniture to create harmony.”

Adorned with vintage pendant lighting, the entrance foyer is an invitation to discover the elegant duplex where Humbert & Poyet designed much of the furniture and fittings, down to the brass handles. “Our goal is to translate a complex atmosphere into a three-dimensional space,” say the pair. “We communicate constantly throughout a project. Our symbiosis forms the foundation of all we do and ensures the space that we’ve imagined works.”

With its new terrazzo floor and stairs, the hallway features *Subway Drawings*, an artwork by Keith Haring, as well as Le Corbusier chairs, a Jean Prouvé chest, and Georges Jouve and »



This page A David Ostrowski artwork hangs above a pair of stools by Eero Saarinen in the living room. Floor lamps by Gino Sarfatti. 'Grand Théodore' sofa and 'Gabrielle' coffee table, both by Humbert & Poyet. Opposite page, clockwise from top left Mid-century Dutch pendant light. Brass door hardware and pendant light in brass and opaline above the stairs, both by Humbert & Poyet. An artwork by Bertrand Lavier delivers a smack of colour to the mostly monochromatic interiors. Vintage table lamp, ceramics by Georges Jouve and Valentine Schlegel from Thomas Fritsch - Artrium gallery, 'Ava' floor lamp by Humbert & Poyet and Cassina chaise by Le Corbusier.



This page Adding drama to the kitchen is the 'Asterics' suspension light in bronze and frosted glass by Humbert & Poyet which hangs above custom cabinets in a painted finish by Farrow & Ball with brass trim and benchtops in Arabescato marble. Opposite page, clockwise from left 'Tractor' stools by BassamFellows at the island bench provide a casual dining place. Reflected in a mirrored finish in the formal dining room, Cassina 'Superleggera' chairs by Gio Ponti surround an 'Appolline' table by Humbert & Poyet with a wall sculpture made in timber and metal by Berlin-based artist Katja Strunz. Sling chairs by Le Corbusier, console by Jean Prouvé, ceramics by Georges Jouve and Olivier Gagnère, 'Lolita' lamp by Humbert & Poyet and green console table with brass radiator cover.

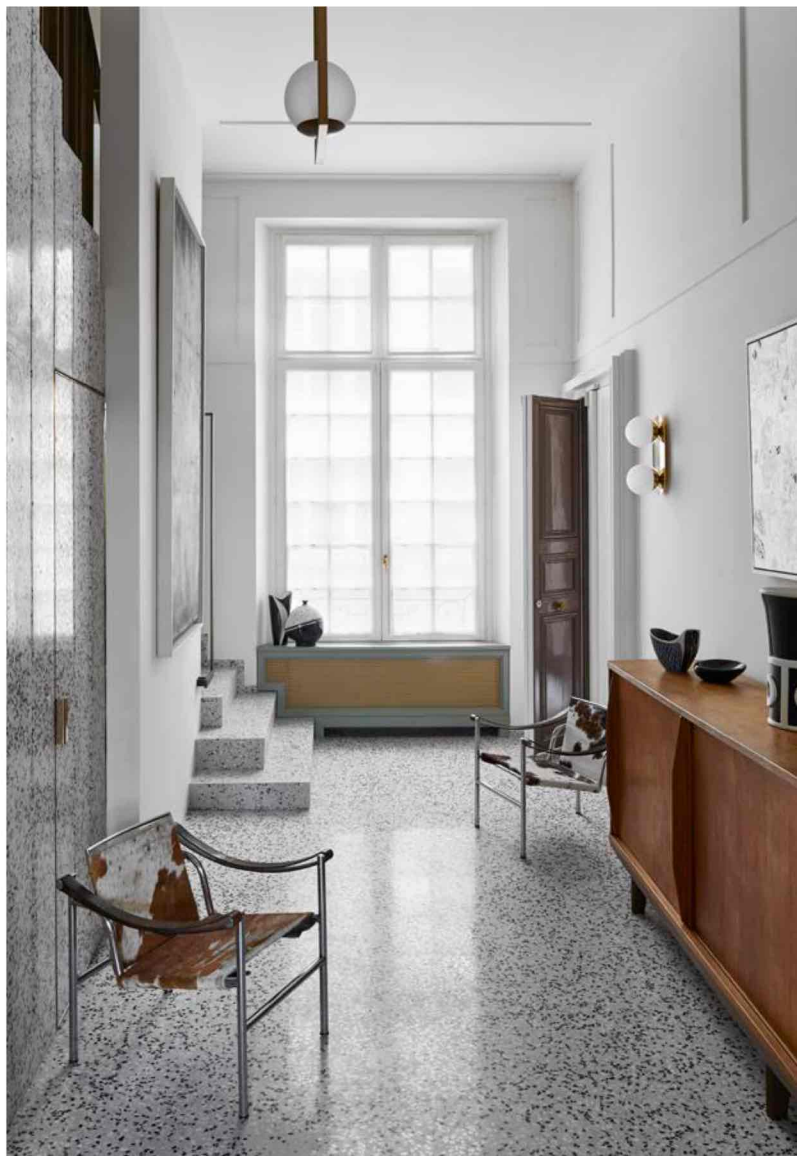


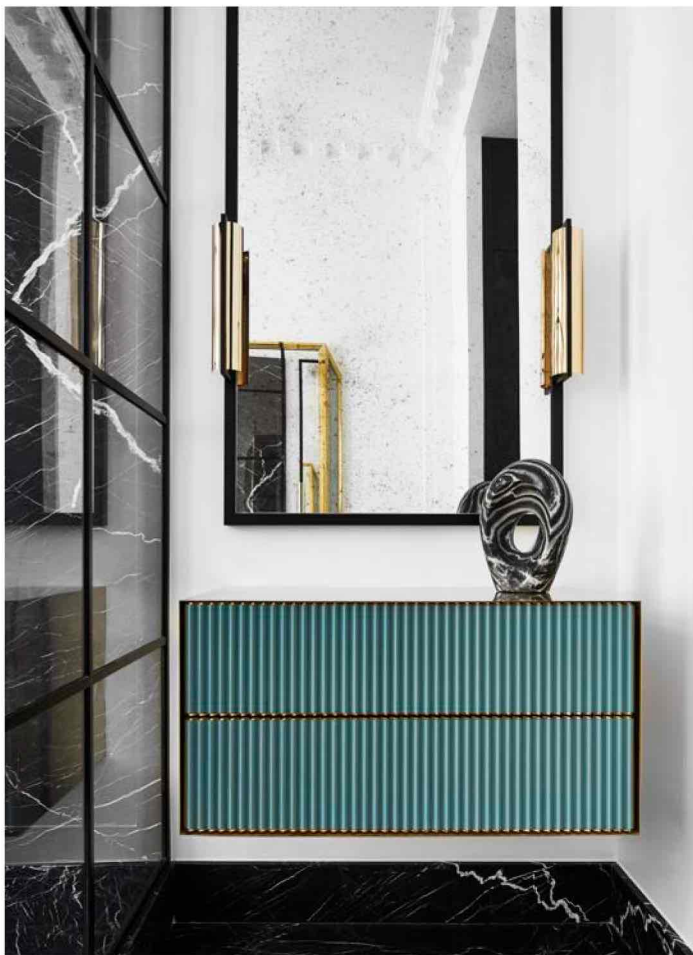
« Olivier Gagnère ceramics. Throughout the duplex apartment, architectural elements added in the 18th century, art-deco details and Italian references from the 1950s create a delicate atmosphere.

In the cosy living room, which includes a Gino Sarfatti sconce, a painting by Bertrand Lavier, ceramics by Valentine Schlegel and Georges Jouve from Thomas Fritsch – Artrium gallery, an Eric Schmitt vase, a photograph by Robert Mapplethorpe and a Le Corbusier recliner, several pieces were designed by Humbert & Poyet including the marble fireplace. The ‘Ava’ floor lamp, the blue velvet sofa and the white armchairs are by the designers for The Invisible Collection and echo their ethos of “luxury meant for everyday living”. “We have designed statement pieces that evoke a sense of sophistication through an understated elegance,” say the duo.

The white background and mostly neutral colour palette – that also includes black and greys – highlight the furniture and art in the high-ceilinged apartment, which is bathed in natural light. “We enjoy creating compositions, like a stage for a playwright,” say the designers. “For this project, we were particularly inspired by the modernist, art deco and Memphis movements, paired with classicism. These periods are reflected through the choices of furniture, hues and finishes. All of this creates strong and refined spaces, which are statements in themselves.”

In the formal dining room, ‘Superleggera’ chairs by Gio Ponti surround a brass table and pendant light by Humbert & Poyet. On the wall, a lamp by Angelo Lelli and a painting by Günther Förg from Almine Rech Gallery complement the design. Functional and chic, the kitchen mixes Arabescato marble with green cabinets, black BassamFellows ‘Tractor’ stools and the ‘Asterios’ pendant light in bronze and frosted glass by Humbert & Poyet. »





« “The materials were selected for their character and their sense of harmony,” say the designers. “Marble brings richness, wood conveys warmth and terrazzo adds a modern twist. We also enjoy working with brass as it highlights the other materials.” Playing with scale and proportions, and using geometric shapes, touches of bold colours and metallic accents, Humbert & Poyet fully expressed their firm’s creativity through this project.

An impressive terrazzo staircase, with a pendant light by the French designers, leads to the bedrooms situated on the upper level. In the master bedroom, a triptych by Aaron Young dresses up the wall where the Flexform bed sits, anchored by two pendant lights by Franco Albini from Magic Circus Éditions. On the other side of the space, a Serge Mouille sconce and a Pierre Paulin chair combine with the Humbert & Poyet chest and the Paul Stanley painting. Playing with mirror effects, the brass wardrobe – also designed by the French duo – looks glamorous. “The main source of inspiration was the function of the space,” say the designers. “We wanted to design a timeless and elegant family home, suitable for entertaining, and with art and design as part of the lifestyle.”

With a work calendar teeming with design projects around the world, Humbert & Poyet has now switched its focus onto an upcoming high-end, ultra-luxury 19-storey residential building in Monte Carlo, two hotels in South Korea and new Beefbar restaurants. 15

humbertpoyet.com



This page, from top Console in brass and hand-brushed lacquer beneath a mirror and sconces, all by Humbert & Poyet, topped with a sculptural object by Kelly Wearstler. Flexform bed with bedside tables by Humbert & Poyet and pendant lights by Magic Circus Éditions above. Triptych artwork by Aaron Young. Armchair by Pierre Paulin, sconce by Serge Mouille, sideboard by Humbert & Poyet, painting by Paul Stanley and 1950s ceramics by André Aleth Masson from Thomas Fritsch – Artrium gallery. Opposite page Mirrors with brass trim by Humbert & Poyet reflect a dazzling scene in the bathroom with generous slabs of Arabescato marble and timber drawers finished in hand-brushed lacquer.



SPEED READ

» Designers Emil Humbert and Christophe Poyet restored the timeless glamour of a duplex apartment in Paris, originally built in the 17th-century as a *hôtel particulier* and later serving as a jewellery atelier, updating it for modern family life. » The first floor holds living, dining and kitchen spaces, and is dedicated to hosting family and friends, while the private upper level holds bedrooms and bathrooms. » A neutral palette of white, black and grey is complemented by swathes of rich blues and greens, and the imaginative use of marble, terrazzo and brass accents. » Furniture and finishes centre around the mix of art and design, including a work by Keith Haring, and iconic modernist pieces by the ilk of Gio Ponti, Serge Mouille and Le Corbusier. » Humbert & Poyet contributed custom touches, including brass handles, a pendant lamp and the shimmering brass wardrobe.